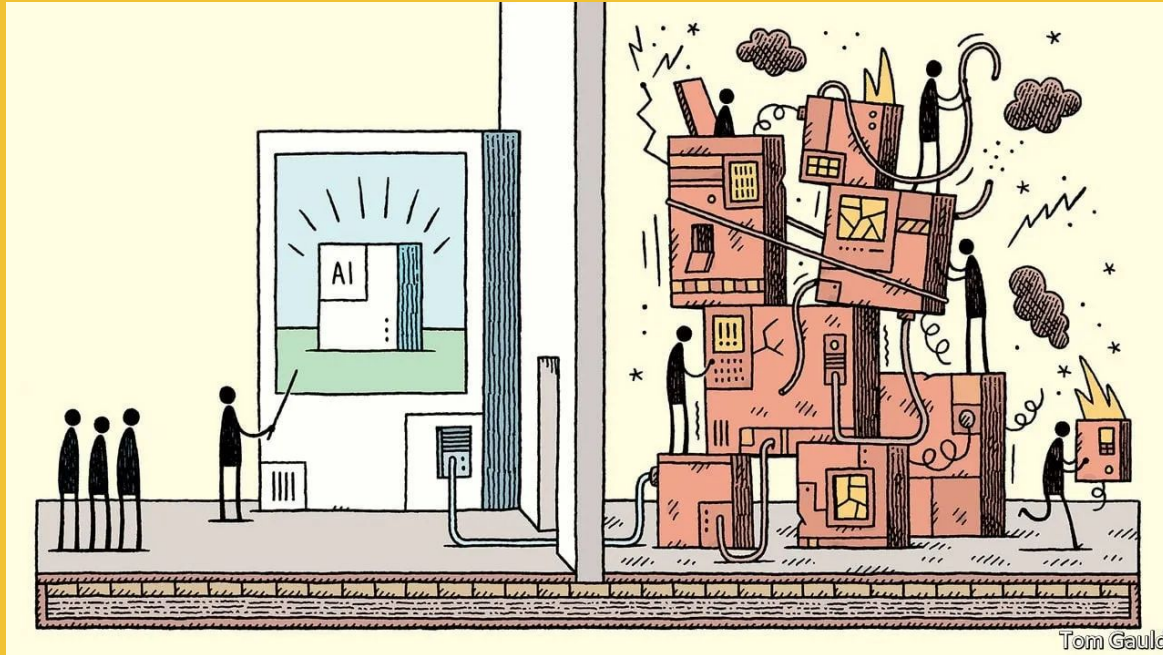


Thoughts on starting an AI company

Judith van Stegeren



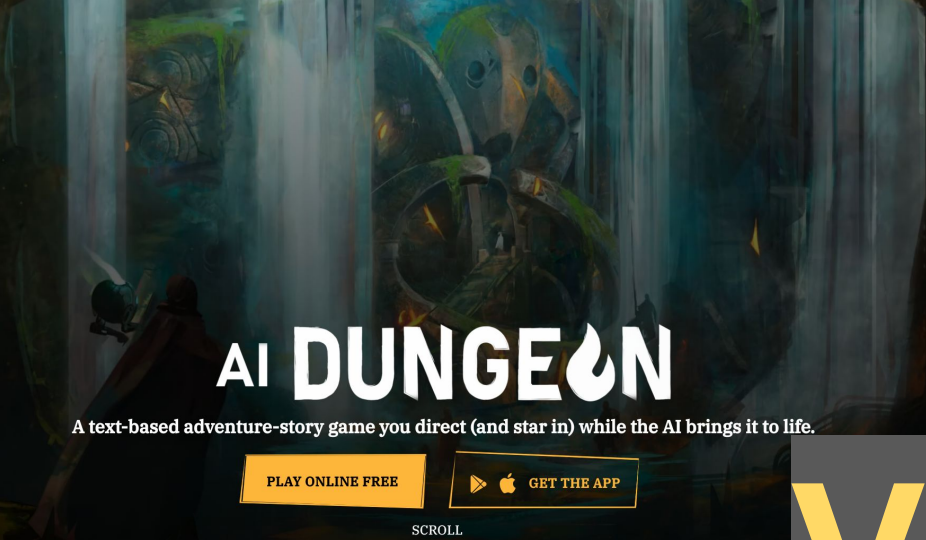
Tom Gauld

THE AI ALIGNMENT CHART

	ABILITY PURIST (EXCEEDS HUMAN ABILITY)	ABILITY NEUTRAL (MAKES TASK EASIER)	ABILITY REBEL (USEFULNESS QUESTIONABLE)
ALGORITHM PURIST (MIMICS HUMAN COGNITION)	"TERMINATOR IS AI"	"C3PO IS AI"	"WALL-E IS AI"
ALGORITHM NEUTRAL (LEARNS AND GENERALIZES)	"ALPHA GO IS AI"	"XGBOOST IS AI"	"TINDER IS AI"
ALGORITHM REBEL (METHOD IRRELEVANT)	"A METAL DETECTOR IS AI"	"BUBBLE SORT IS AI"	"MAGIC 8 BALL IS AI"

Will you...

- **Build AI for yourself?**
- **Build AI for others?**
- **Build the things AI companies need?**



Creative AI

VS

Serious AI

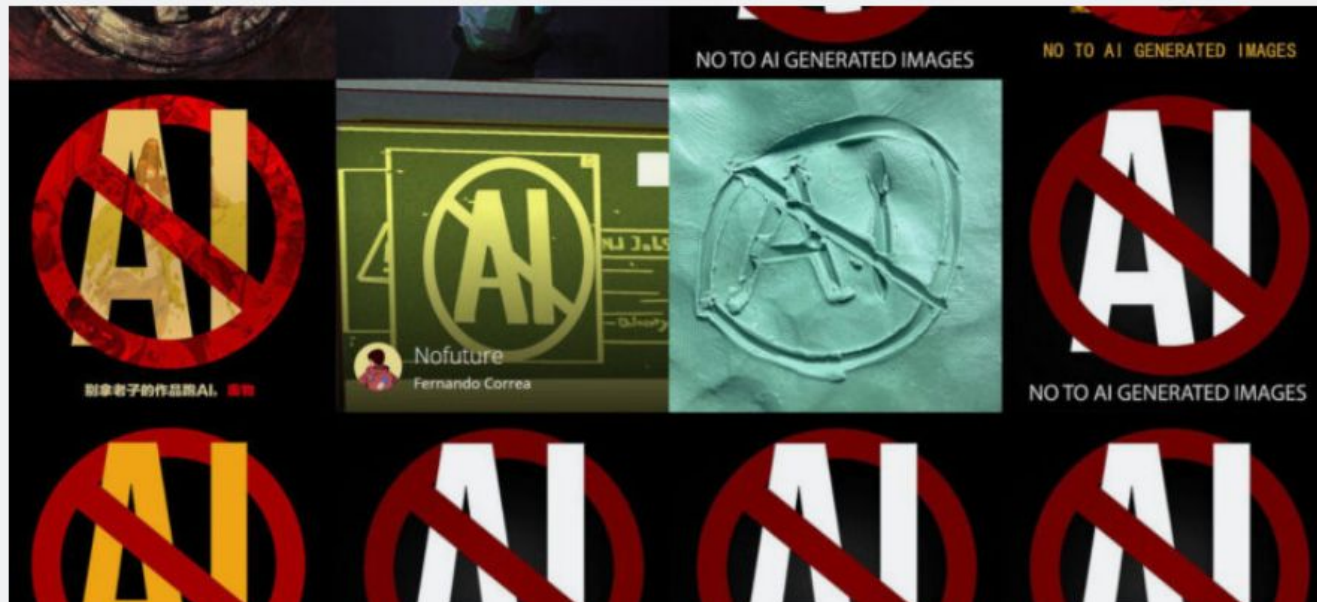


TRENDING ON ARTSTATION —

Artists stage mass protest against AI-generated artwork on ArtStation

Users of popular portfolio site seek to castigate and disrupt AI-generated art.

BENJ EDWARDS - 12/15/2022, 7:08 PM





**“Wizarding”
or
“Wizard of Oz
method”**

When looking for a co-founder...

What would Warren Buffett do?



SOME ADVICE ON HOW TO COPE **AS A STARTUP FOUNDER**

